

## Washing Cars and Other Vehicles



### Vehicle Shop Practices for a Cleaner Bay

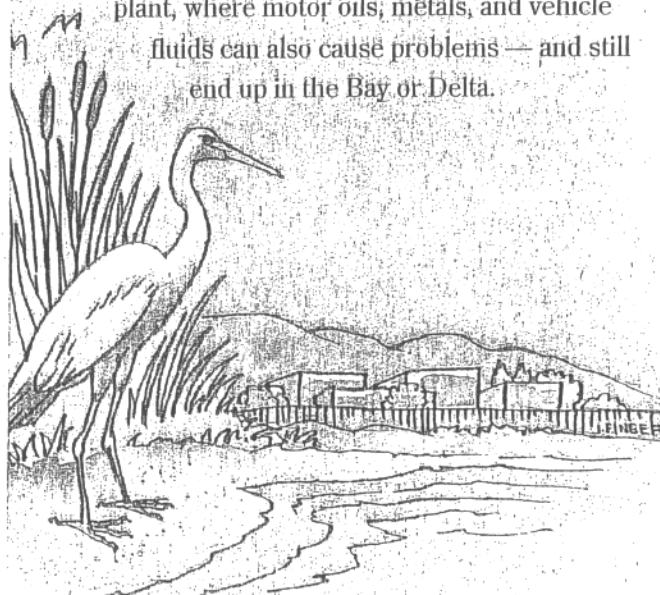
PRODUCED AND DISTRIBUTED BY BAY AREA  
WASTEWATER TREATMENT PLANTS AND  
STORMWATER MANAGEMENT AGENCIES

## Vehicle Service Shops Can Make a Difference.

Vehicle service employees can help protect water quality in important ways by following the guidelines for shop practices and maintenance in this brochure. We hope you will join with us and businesses throughout the Bay Area as we work together to safeguard the health of the Bay.

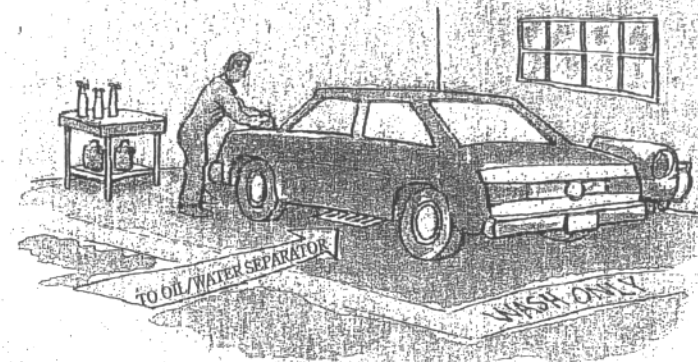
Outside your shop, storm drains carry runoff from streets, gutters, and parking lots directly to local creeks and the San Francisco Bay and Delta with no waste treatment. When oils, dissolved metals, and other vehicle fluids reach a creek or the Bay they threaten water quality and the health of wildlife in our waterways.

Inside the shop, most drains carry waste into a sanitary sewer and on to the local wastewater treatment plant, where motor oils, metals, and vehicle fluids can also cause problems — and still end up in the Bay or Delta.



## How You Can Help!

Even biodegradable soaps are toxic when they reach a creek or waterbody.



- ☐ Make sure soapy wash water does not run into a street, gutter, or storm drain. It should be collected and passed through an oil-water separator before discharging to the sanitary sewer.
- ☐ Designate a vehicle washing area with a wastewater collection and treatment (oil/water separator) system. Use only that area for vehicle washing
- ☐ Recycle wash water to minimize discharge to the sanitary sewer.
- ☐ Use soap and elbow grease to clean wheels. Never use spray-on (acid-based) wheel cleaners where rinsewater may flow to a street, gutter, or storm drain. If used on a wash pad, acid-based products may require additional treatment beyond oil/water separation.

