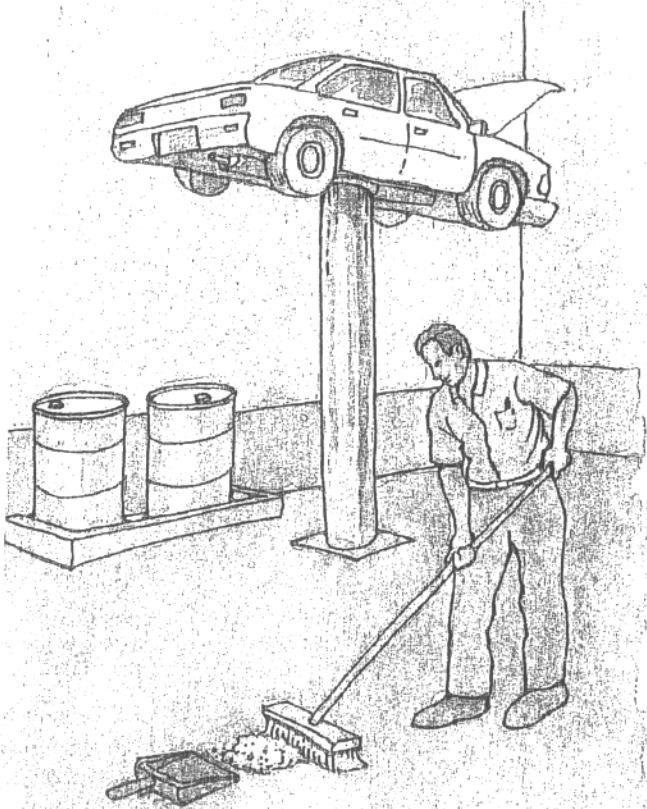


Keeping a Clean Shop



Vehicle Shop Practices for a Cleaner Bay

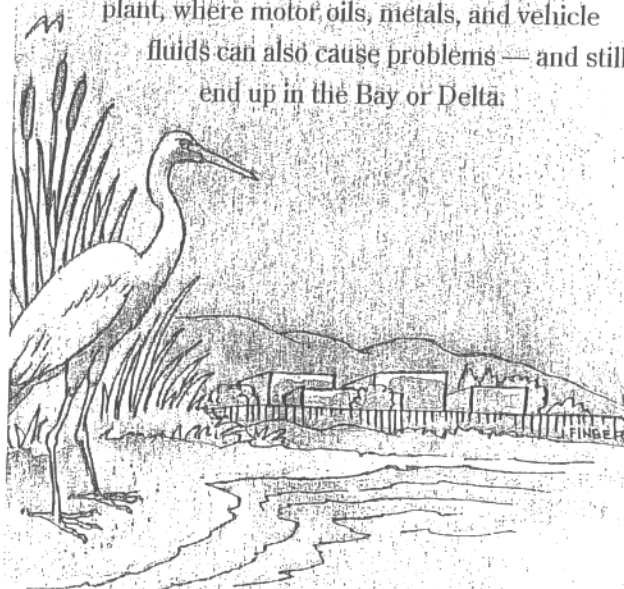
PRODUCED AND DISTRIBUTED BY BAY AREA
WASTEWATER TREATMENT PLANTS AND
STORMWATER MANAGEMENT AGENCIES

Vehicle Service Shops Can Make a Difference.

Vehicle service employees can help protect water quality in important ways by following the guidelines for shop practices and maintenance in this brochure. We hope you will join with us and businesses throughout the Bay Area as we work together to safeguard the health of the Bay.

Outside your shop, storm drains carry runoff from streets, gutters, and parking lots directly to local creeks and the San Francisco Bay and Delta with no waste treatment. When oils, dissolved metals, and other vehicle fluids reach a creek or the Bay they threaten water quality and the health of wildlife in our waterways.

Inside the shop, most drains carry waste into a sanitary sewer and on to the local wastewater treatment plant, where motor oils, metals, and vehicle fluids can also cause problems — and still end up in the Bay or Delta.



How You Can Help!

Good housekeeping practices minimize liability, reduce costs, and make it easier to detect spills and potential problems.



- ☐ Prevent spills — but if they occur, clean up immediately.
- ☐ Sweep or vacuum the shop floor frequently.
- ☐ Damp-mop work areas instead of hosing down.
- ☐ Purchase and maintain absorbent materials for immediate spill containment and cleanup.
- ☐ Seal or remove floor drains to prevent accidental discharges to the sewer.
- ☐ When you mop the floor:
 1. Spot clean any spilled oil or fluids using absorbents or rags.
 2. Use dry cleanup methods: Sweep the floor using absorbents.
 3. After steps 1 and 2 above (if mopping is still needed), mop and discharge mop water to the sanitary sewer.
- ☐ Do not pour mop water into the parking lot, street, gutter, or storm drain.

