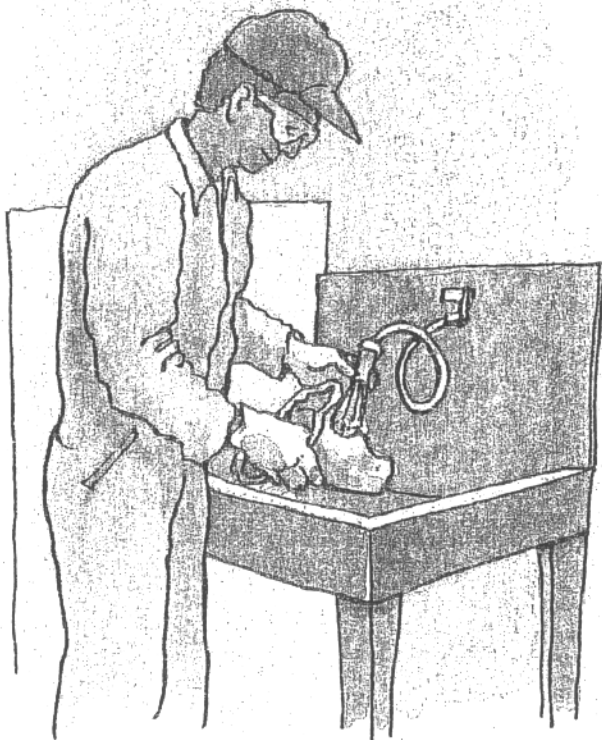


## Engine & Parts Cleaning & Radiator Flushing



### Vehicle Shop Practices for a Cleaner Bay

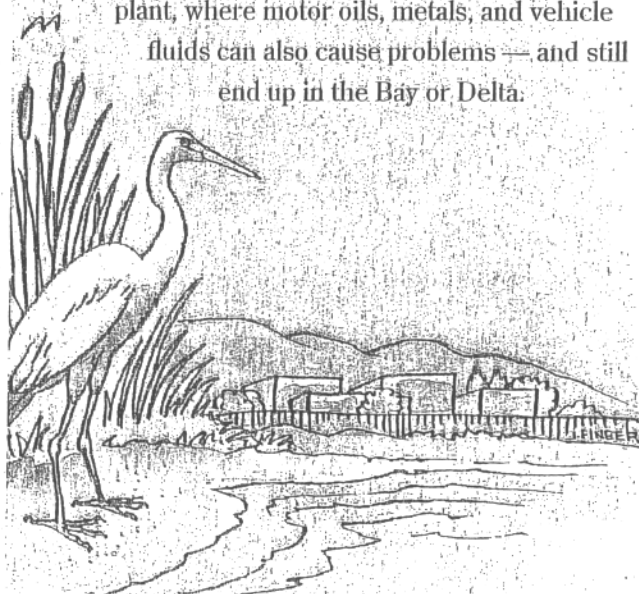
PRODUCED AND DISTRIBUTED BY BAY AREA  
WASTEWATER TREATMENT PLANTS AND  
STORMWATER MANAGEMENT AGENCIES

## Vehicle Service Shops Can Make a Difference.

Vehicle service employees can help protect water quality in important ways by following the guidelines for shop practices and maintenance in this brochure. We hope you will join with us and businesses throughout the Bay Area as we work together to safeguard the health of the Bay.

Outside your shop, storm drains carry runoff from streets, gutters, and parking lots directly to local creeks and the San Francisco Bay and Delta with no waste treatment. When oils, dissolved metals, and other vehicle fluids reach a creek or the Bay they threaten water quality and the health of wildlife in our waterways.

Inside the shop, most drains carry waste into a sanitary sewer and on to the local wastewater treatment plant, where motor oils, metals, and vehicle fluids can also cause problems — and still end up in the Bay or Delta.



## How You Can Help!

**Solvents are hazardous to employees and can ignite in sewers.**

- ☐ Never discharge petroleum-based solvents and radiator fluids to the sewer or storm drain. Instead, recycle them.
- ☐ Make sure no wastewater from engine or parts cleaning or steam cleaning is discharged where it may flow to a street, gutter, or storm drain.
- ☐ Obtain approval from the wastewater treatment plant before discharging cleaning solutions or rinsewater into the sanitary sewer.
- ☐ Designate specific areas for engine, parts, or radiator cleaning. These areas should be indoors and convenient to treatment devices. Do not wash or rinse parts outdoors.

